

CALIFORNIA DEPARTMENT OF FORESTRY

# COMMUNIQUE

MAY 1983



***Mobile equipment on the move....***

***then and now (see page 7)***

## Director's corner



*Jerry Warte*

Many times we tend to forget that good, solid, communications are an integral part of a good, solid, organization. For this reason, I would like to share the "Ten Commandments of Human Relations" with each of you.

### Ten Commandments of Human Relations

1. **SPEAK TO PEOPLE.** There is nothing so nice as a cheerful word of greeting.
2. **SMILE AT PEOPLE.** It takes 72 muscles to frown, only 14 to smile.
3. **CALL PEOPLE** by name. The sweetest music to anyone's ears is the sound of his own name.
4. **BE FRIENDLY** and helpful. If you would have friends, be a friend.
5. **BE CORDIAL.** Speak and act as if everything you do is a genuine pleasure.
6. **BE GENUINELY** interested in people. You can like almost everybody if you try.
7. **BE GENEROUS** with praise — cautious with criticism.
8. **BE CONSIDERATE** with the feelings of others. There are usually three sides to a controversy; Yours, the other fellow's, and the right side.
9. **BE ALERT** to give service. What counts most in life is what we do for others.
10. **ADD TO THIS** a good sense of humor, a big dose of patience and a dash of humility, and you will be rewarded many-fold.

## \$5,000 ARSON REWARDS

By K. R. Goings

On March 17, as a result of legislation sponsored by Assemblyman Don Sebastiani, Napa County residents Robert B. Haggard (retired) and John Patrick McGill (a self-employed carpenter) received \$5,000 in arson rewards. The rewards were presented by Assemblyman Sebastiani's field representative Jason Breaw for information Haggard and McGill provided CDF which led to the arrest and conviction of Jerry Spencer Strafford of Napa for arson.



John Patrick McGill, Robert B. Haggard and Jason Breaw.

## Nielsen tours Tehama-Glenn



Unit Forester Dennis Bebensee points out the various brush problem areas of the Tehama-Glenn Ranger Unit to Senator Nielsen.

Senator Jim Nielsen and his local representatives Sherry Beck and Jim Branham were guests of the Tehama-Glenn Ranger Unit for a coffee break, tour, and brief question and answer session.

On hand to meet with Nielsen were Region Chief Gary Todd, ranchers Elwin Roney and Pat Baccala, Schedule C volunteer fire chiefs, ranger unit staff and helitack personnel.

The Senator was shown the

master planning program for Chaparral Management. Ranger-in-Charge Bob Kersteins pointed out that currently, when weather permits, the ranger unit is prescribe burning 6,000 acres a year of private lands and may be undertaking an additional 4,000 acres a year through cost-sharing programs. Another highlight of the visit was a tour of the winter storage base, at the Red Bluff Airport, for the Vina (205) and Bieber (202) helicopters.

## Barn dance is money maker

On November 12, 1982, CDF employees stomped together at the third annual Sacramento Benefit Barn Dance and for a very good cause—the U. C. Davis Burn Center. Music was provided by "County Fever" - there were dance and country dress contests and the usual raffle tickets. After all outstanding bills were paid, the dance netted \$454.00. Terrific!

Committee members Bea Walls, Bill Morrison, Rose Gong, Manual Roman, and Tom Randolph did an exceptional job but they all agree that the mainstay and driving force was chairperson Gloria De Roo.

It's time now to plan for the 1983 event. Anyone who would like to contribute or be on the committee should contact Bill Morrison at 323-2495. He is especially looking for suggestions on when and where to hold this popular CDF function.

# Energy maintenance program moves forward

Energy and Facilities Maintenance Manager Al McNulty provides the following update of CDF's energy program. Assisting Al are Energy Management Program Assistant Paul De Koekkoek and CSUS engineering student Bob Jacobo. It's all part of the Camps, Engineering and Technical Services (CETS) section headed by Jim Hixon.

Using 1979/80 fiscal year (F.Y.) as a base, the department's goal is to reduce energy consumption 20 percent by the end of F.Y. 1984/85. In Al's judgment, this goal can be achieved with continuous energy conservation efforts by CDF staff. He notes that in the first two quarters of 1982/83, the department reduced consumption by 11.3 percent and realized a cost avoidance of \$86,157 for electricity, natural gas and propane.

According to Al, the program is divided into two categories: energy conservation and alternative energy supply sources.

Energy conservation is defined as the reduction and ultimate elimination of wastefulness by:

1. The prudent operation of buildings in the use of water and energy for space conditioning (heating, ventilating, and cooling), domestic water heating, lighting, and food preparation, including effective maintenance programs for structural, electrical and mechanical complements of each building.

2. Retrofitting of buildings and utility systems with conservation measures to increase thermal efficiency. This includes thermal insulation of ceilings, walls, and floors as well as modifications to glazing, weatherstripping, caulking, and interior and exterior lighting systems. It also involves installation of clock thermostats, time clocks, low-flow devices for shower heads and faucets and the insulation of plenums and ductwork on heating, ventilation and air conditioning systems.

During 1982/83, \$400,000 was approved (and allocated in October 1982) to each region and to the Fire Academy for energy conservation measures and wood energy. The department has initiated a formal audit and survey of each CDF facility us-

ing the utility companies, the California Conservation Corps (CCC) and department staff. The CCC Energy Conservation Program, located at the Stockton Center, has completed audits and retrofitting is in progress at the Fire Academy and the Tuolumne-Calaveras and Amador-El Dorado ranger units.

There is also a new project to survey each facility with a heat scanner unit and Polaroid photos to detect and document heat loss or gain that cannot be seen or felt by human senses.

Al defines Alternative Energy Supply Sources as "the use of physical and natural resources available at the department-owned facilities which can be substituted for traditional energy supplies." The available resources include solar, wind, wood energy and photovoltaic (conversion of "sun-power" to electricity).

The CCC has completed two large solar hot water systems, consisting of 20 and 8-panel arrays, at the academy's dormitory wings and there are plans to add solar to the messhall and kitchen building this year. Solar systems are now being installed at nine forest fire stations in Region IV and at the Placer, Butte, and Bollinger Canyon Fire Centers. Growlersburg Conservation Camp is constructing 66 of the 4' by 8' fiberglass solar collector panels to be installed at CDF facilities with technical assistance from the engineering section. In addition, each region is in the process of surveying every facility for potential use of solar hot water systems. This information will be used to develop future budget submittals and programs to make the best use of alternative energy.

Four facilities have been identified by the Energy Assessment Program (EAP) of the Department of General Services as feasible locations for wind generation plants. These plants will be considered for submittal in the 1984/85 budget or for installation using third party financing and revenue bonds. The EAP is evaluating other department locations by the installation of automatic anemometer equipment to assess wind resources. The anemometer program

is operated by the U.C. Santa Barbara School of Engineering.

In the area of wood energy, funds have been allocated to Intermountain and Miramonte Conservation Camps for construction of wood burning stoves for space heating in department facilities.

The department has numerous photovoltaic systems installed throughout the state and additional sites are being surveyed to further expand the use of this resource to obtain electrical power from the sun.

## *It pays to save*

Tehama-Glenn Ranger Unit has just made a big step toward putting \$4,989.00 of discretionary savings back into their budget by spending \$1,089.00.

The picture shows PG&E Energy Representative Adrian Fitzpatrick presenting Tehama-Glenn's MSS I Kirsten Westrip a refund check for \$140.60 to CDF. This was for participating in PG&E's Lighting Conversion and Energy Refund Program. This was based on purchasing 55 elliptical lamps, 216 fluorescent lamps, hot water heater blankets and miscellaneous insulating wrapping. Kirsten was very instrumental in determining the needs of the Ranger Unit and purchasing the energy efficient items.

Savings are calculated on the life expectancy of the items purchased. It is anticipated that this unit will save 66,521 kilowatt hours at 7 cents per kilowatt for the expected life of the items.



# Flood rescue earns honors from CDF

A dangerous but successful rescue of a motorist stranded by threatening flood waters has earned two Los Molinos volunteer firemen commendations from the California Department of Forestry and Tehama Rural Fire Department.

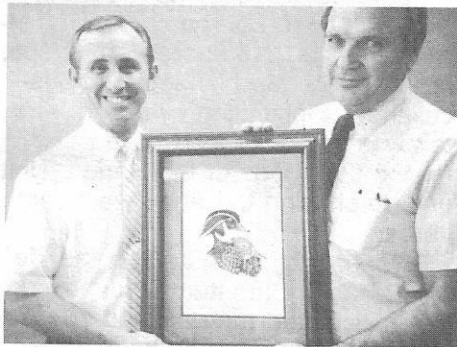
Bill Stone was honored for "meritorious service for courageous performance above and beyond the call of duty," while Gene Cunha was presented an "expression of appreciation and recognition."

Stone and Cunha received the awards this week from CDF ranger-in-charge Robert Kerstiens and state ranger Jerry Bever, who was battalion chief on duty at the time of the incident.

The two firemen are credited with rescuing a motorist who had been stranded in more than five feet of swift-moving flood water that had submerged a roadway on the east side of Tehama January 27 this year.

While the swift current discouraged the driver from attempting to leave the vehicle, concerns were raised that debris in the stream could overturn the vehicle and drown the occupant.

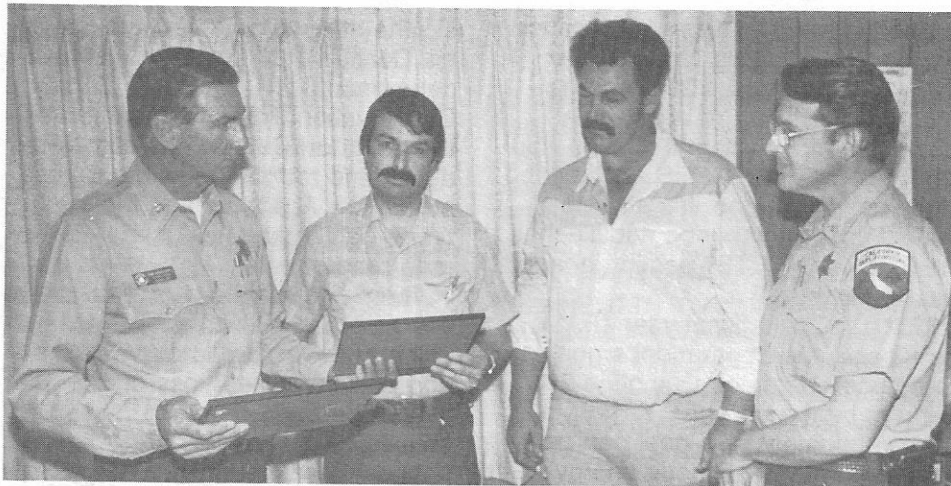
## Day to Day



SFR III Bob Day and Assistant Chief Richard Day.

On March 31, newly appointed Fresno-Kings Ranger Unit Executive Officer Robert Day was presented a Bob Petersen original pen and ink drawing of a pair of wooden ducks as a going away gift from Region I personnel. Artist Petersen has done several pen and ink drawings for California duck hunting stamps.

The gift was presented by Assistant Chief Richard Day (no relation) during a luncheon in Bob Day's honor at Santa Rosa headquarters.



From left, California Department of Forestry Ranger-in-Charge Bob Kerstiens presents awards to Los Molinos volunteer

firemen Gene Cunha and Bill Stone as state ranger Jerry Bever looks on. (Daily News photo.)

Cunha and Stone started wading into the water with a lifeline, but Cunha had to turn back because he could not fight the current.

Stone, who is 6' 5" tall and weighs 335 pounds, was apparently heavy enough not to get swept downstream, so he continued on, securing a lifeline to the vehicle, then

helping the occupant back to shore hand-over-hand on the lifeline.

Once the victim was safe on shore, Stone returned to the vehicle and attached a winch line so it could also be pulled out of the water. He was commended for not only saving a life, but saving the man's property as well.

## "best boss"

On February 14 all the "gals" in the Region I office presented Chief Ernest with a champagne cake with pink frosting, bearing the message "To the Best Boss in the World, Dick Ernest, from the girls in the office."

The cake was a successful surprise to Dick. He immediately called the staff meeting, which was in session, to a halt and told everyone it was "time for cake."

The presentation was made to the chief as a token of thanks from all the "gals" for his thoughtfulness in creating the new policy of calling them together periodically to keep them informed on such things as budget cuts, administrative changes, and other important issues.

## Communiqué

Published by the Office of Public Affairs, Department of Forestry, 1416 Ninth St., Sacramento, CA 95814. Telephone: (916) 445-9920; 485-9920 (ATSS); (Green) 47. Ethel White, editor. Composition: Word Processing, Edna Musial; Graphics: Dave Rodriguez; Personnel Transactions: Vera Fava.

## Grievance settled

The Department has entered into an understanding with CDFEA in settlement of a grievance arbitration filed on behalf of seasonal employees in Unit 8. The grievance alleged that delays in the completion and submission of dental insurance documents resulted in some seasonal employees not receiving coverage in a timely manner.

The Department acknowledged that some enrollments may have been untimely due to eligibility questions, documents processing, and postal delays. CDF, therefore, agreed to support claims for dental expenses incurred by seasonal employees to the extent to which they would have been covered by insurance. As with most dental insurance programs, there is a "deductible" which requires the insured to pay a percentage of the charge.

Letters are being mailed to each seasonal employee who was on the payroll after January 1, 1983, advising of the procedure for filing claims for dental expenses. The deadline for submitting a claim is May 31, 1983, after which the claim and the employee's eligibility will be verified.

# Land management planning - an expanded role

by Del Albright

**PLAN** (plan) n. Any detailed scheme, program or method worked out beforehand for the accomplishment of an objective.

**MANAGEMENT** (man' ij - ment) n. The act, manner or practice of managing, handling or controlling something.

These words describe an expanded role for the California Department of Forestry. CDF is recognized nationwide for its ability to plan, manage, and very importantly, get the job done - both in Fire Control and Resource Management. However, now we are combining these words to accomplish an awesome task - Land Management Planning. We must deal with the entire entity known as the "land". This means integrating and coordinating resource and fire management.

There is little doubt that we do our fair share of planning. To cite only a few examples, the California Forest Improvement Program (CFIP) requires a Forest and Land Management Plan to accompany projects. Many field rangers and foresters are involved in Coordinated Resource Management Plans (*Communiqué* July 1982). Further, the Chaparral Management Program (CMP) calls for a Land Management Plan. We have prescribed burn plans; fire protection planning; plans for mutual aid; fire defense planning and the list goes on. These all, in one way or another, "manage" or "plan" the use and protection of land.

Director Jerry Partain summarizes the process as "good land management planning is accomplished by identifying specific goals then proceeding to address these goals in the most direct and efficient way possible. Planning without clear goals is never productive."

Deputy Director Bob Paulus affirms the need for good planning and management. The efficiency and credibility of the entire Fire Protection/Technical Services side of CDF stems partly from continuous planning, updating, training and sound management.

The application of CDF's many services now needs to blend together in the planning approach and actual execution, more so than in the past. We have landowners asking us (the public agency) for a land management plan for their property. Other agencies and local government ask CDF for planning assistance - both in fire and resource management.

Perhaps requests emanate from a CFIP or CMP project, or the fear of destruction and loss from wildfire leads a landowner to the CDF District Ranger for fire prevention and protection planning. No matter, the requests are sounding more and more similar. It may sound like this one from a landowner/rancher: "I would like a management plan for my property that will lower wildfire risks and allow me to do several things on my ranch: prescribed burning; timber harvesting; increase deer hunting; develop a better road network both for fire protection/prevention and my personal uses; and increase the range carrying capacity for my cows." For CDF managers, the job involves developing an integrated, coordinated resource and fire management plan, and doing it jointly with others who have an interest.

## HOW MUCH CDF INVOLVEMENT?

We may be asked, within the confines of CDF programs, to actually write the plan. Then again, we may serve merely as an advisor to another professional, such as a Registered Professional Consulting Forester, writing the plan. Or as in CFIP, we may be the review and regulatory agent determining the adequacy of a management plan. The key to our involvement relies on ranger unit operations that tie together resource and fire management functions at every level.

## THE PLANNING PROCESS

The planning process does not need to be complicated. There will be times when several agencies and individuals may be involved. For example, the Coordinated Resource Plan for the Englebright Wildlife Project (*Communiqué*, June 1981) included 22 agencies/departments and experts. Coordinated Resource Management and Planning projects like this are based on group coordination. Not all planning efforts need be extensive.

Land management planning is not a "cook-book", fill-in-the-blanks process. As professionals, we need and require flexibility to allow our judgment, creativity and integrity to guide our actions. There needs to be a "common approach". This is what the planning process in CDF strives to achieve.

Whether you believe in the KISS principle (Keep it Simple Sir), or advocate the compre-

hensive approach of a USFS Environmental Analysis (EA), it is imperative that we all be on the same wave length - the "common approach". A land management plan is the document that provides the opportunity.

## LAND MANAGEMENT PLANS

Land management plans provide strategies, policies and guidelines for the use and protection of each acre in the management area. A land management plan, whether for a landowner or a large agency, must contain some basic information. There must be a set of goals and objectives that are realized by following recommended courses of action, based on the capabilities of the property and the aims of the landowner. The landowner should also be made aware of alternative strategies. There shall be an analysis of factors like economics; impact of/to surrounding ownerships; markets; environmental impacts/mitigation; and many others - each situation will and should be unique.

In summary, a land management plan should contain the necessary and sufficient information to meet the landowner's objectives while still enhancing the resource base. "Necessary" is something that must be accomplished or established; "sufficient" asks if all the necessary information and tasks are, in fact, included in the plan. Most importantly, the plan must integrate fire management with resource management. To manage property means first to exclude and prevent wildfire. CDF is the agency designed to do just that.

## Albright moves to Academy

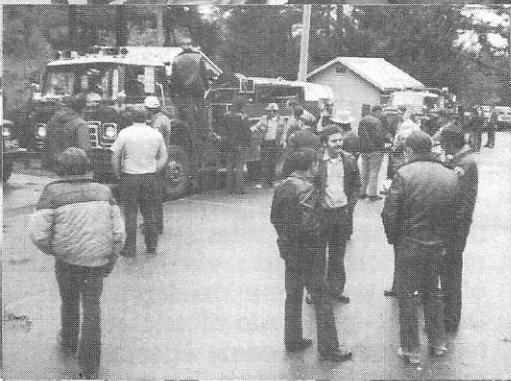
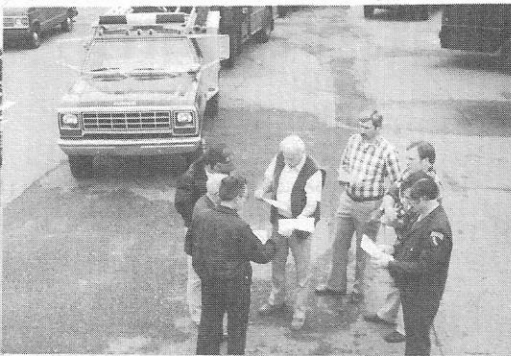
Resource Management staff will soon have the opportunity to participate in a comprehensive training program. The CDF Fire Academy has hired Forester II, Del Albright as Director of Resource Management Training.

Albright's move to the Fire Academy follows three years at Sacramento Headquarters. He spent two of those years on a Training and Development tour to other departments in the Resource Agency that earned him a Masters Degree in Environmental Planning. His last year at headquarters was spent working as a Land Management Specialist - particularly on Coordinated Resource Management and Planning.

Upgrading the professional skills of foresters throughout the department with courses similar to the training fire protection staff receive, is the major objective of the program. The first step, currently being done, is to determine what the training needs are for the 150 foresters

who make up the majority of the Resource Management staff. By evaluating the existing needs assessments within the department, conducting telephone queries of field personnel and visiting foresters and managers in the field, Albright will be able to define these needs. "It seems important to me to ask fire control people how they perceive the training needs of foresters as well," said Albright. "This will be a key ingredient to more effectively integrating foresters into fire control operations."

Upon completion of these steps, in approximately six months, a training program will be developed, with classes beginning in the fall. This program will cover such subjects as stress management, public affairs, effective speaking, Cooperative Resource Management Planning, data processing, forest economics and other technical forest subjects as needed.



# Statewide pilot review - 1983

By Walt Harkness



During March, seven new prototype forestry vehicles were shown statewide by the Mobile Equipment Management staff, six fire engines and a new Camp Crew Vehicle. Each vehicle was a design unique to CDF, with exception of a new light attack vehicle recently built for Mountain Ranch Volunteers, Tuolumne-Calaveras Ranger Unit.

Each region was encouraged to participate with maximum numbers of personnel possible, in order to provide optimum design input and "up-to-the-minute" equipment change requests from field personnel to the headquarter's Mobile Equipment Staff.

The statewide tour included ten (10) locations, two (2) per region, beginning in Shasta Ranger Unit the first week of March and concluding at Region VI Headquarters, Riverside three (3) weeks later. Over five hundred people attended the programs, statewide, with preponderance of attendance in the FAE and Captain classes.

The emphasis of the tour was improved dialogue between "field" users and headquarter's designers. Each program included a slide series on the thirty-year history of Forestry Pilot Model development; a slide series on how a fire engine is built; two hours of hands on equipment "looking", pumping and driving, and two hours of indepth questions and answers.

A prepared uniform set of questions was asked at all locations, seeking statewide opinion on such items as backpumps, ladders, breathing apparatus storage, spare tire storage, mechanical maintenance tools, nozzles, adaptors and ball shutoffs.

Those attending each session also posed their own feelings on desirable design changes, shortages, and most specifically on what was being shown on each of the seven (7) prototype "tour" vehicles. Requests for changes varied from better rear lighting on Camp Crew Vehicles to better ground clearance for sedans to improved fire engine compartment doors and addition of transverse hose beds.

Since the advent of the Forestry Pilot Model # 1 in 1952, there has been a succession of fourteen specialty wildland fire engines designed by forestry, including the present Hydrostatic Model #12H. As each new model has been developed, the field has participated in reviews and field testing. Unfortunately, the sheer geographic size of CDF's responsibility area has limited the number of field personnel who could actively participate in development of each new unit.

The five hundred plus people who participated in this latest review provided an invaluable source of "user" information, suggestions, design ideas and opinions. Their written

suggestions are now being recapped by Mobile Equipment to determine feasibility. Suggestions which can be immediately implemented in 1982/83 equipment will be the first to be handled, with others to follow, where possible.

Additionally, a recap of action resulting from the field recommendations of this prototype statewide review will be printed in a supplemental article.

From all viewpoints, the dialogue and mutual interchange of information from this tour will significantly improve the ability of Mobile Equipment to provide the field the type and quality of vehicles needed in the unique wildland operation.

## Hemet Students Learn About Fire Hazards

In late January, more than 300 Hemet High School students watched gasoline fumes burn, overloaded wiring sizzle, invisible carbon dioxide extinguish candles and aerosol cans turn into flamethrowers.

Volunteers in Prevention (VIPs) Jim Heying and Tom Badham explained fire behavior and fire hazards in six 5-minute presentations to driver, health, and safety classes. They were assisted by high school senior Danny Douglas, a volunteer fire fighter at Little Lake County Fire Station.

Illustrating their talks with table-top demonstrations - all safely controlled, of course - the pair laid emphasis on the "fuel-oxygen-heat" triangle present in any fire, and gave tips on home fire safety and precautions.

Heying, a retired Anaheim fire chief, told some first-hand stories about fires and fielded questions about such things as how dollar damage is estimated from structure fires, how the cause of a vegetation fire is determined, and whether fire fighters really slide down poles.

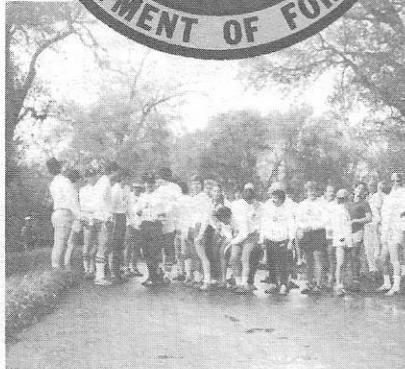
Heying and Badham, a retired purchasing agent for a Seattle area beer distributorship, are part of the VIP team formed in 1980 at the Little Lake station. The half-dozen retirees are most notable for riding small trail bikes to patrol fire closure areas around the valley.

# Chico Chase Race --- 1983

Butte County and Chico firefighters and police officers acted as race rabbits for the 1983 Chico Chase Race held on February 26, 1983, in Chico's Bidwell Park. The firefighters and police officers were "released" 10 yards and 30 seconds ahead of the Chico Running Club. The first 100 running club members who passed five or more rabbits received a Chase Race shirt. The event kicked off Chico Running Week which ended on March 5, 1983 with the Bidwell Classic Marathon.

Jim Nelson, Butte County Fire Department North Chico Volunteer Fire Company firefighter, was the fastest rabbit with a time of 18:18. Mike Wright with a time of 14:58 and Laura Sanchez with a time of 17:36 were, respectively, the fastest male and female runners.

Larry Mathews of Chico Fleet Feet, race sponsor, and the Chico Running Club stated that this was the third running of the event. Approximately 45 rabbits thoroughly enjoyed the race.



## Save this date

A seminar entitled "Hardwood Lumber in California; Efficient Use in the Rough Mill" is coming June 2, 1983. Sponsored by the California Furniture Mfrs. Association, University of California and the CDF Forest Products Utilization Program, the seminar will be held at the LA Mart, 1933 S. Broadway, Los Angeles. This program will provide technical information and innovative techniques for improving the efficiency of lumber processing operations. Topics include hardwood lumber grading and inspection, wood working technology, the manufacturing processes and lumber yield improvement. Participants will gain insights into the lumber-consuming industries and potential markets for California forest products. Representatives of the furniture, cabinet and millwork industries, as well as foresters, will be in attendance.

For more information about this program contact Jesse Rios, Forest Products Analyst, CDF (Region VI), P.O. Box 1067, Riverside 92502, or call (714) 781-4163, ATSS 632-4163, Green Phone 5222-74.



## Rains trigger slides



Very heavy rains this year triggered massive slides throughout California, and especially in the northern part of the state. These two photographs, provided by Fire Prevention Officer Walter Nutting show US Highway 50 above Placerville during the first part of March. The photos were taken near Riverton where the American River crosses the highway. The slide blocked the eastbound lane.

Amador/EI Dorado Ranger Unit responded to the emergency call for help from CALTRANS by dispatching Heavy Dozer 4546 with operators Bob Hennings, John Klos, and Bart Priolo to help clear the roadway of rocks and debris.



# CDF is family

**Editor's note:** The following letters and messages have recently been received in this office. They vividly portray the spirit of friendship and caring which is such a vital part of this organization.

Dear Rex,

As you recall I was hospitalized with symptoms of heart problems on January 24 and subsequently had open heart surgery on February 14. I finally returned home for recuperation on February 26 and am now entered into a cardiac rehabilitation program at Kaiser-Fontana.

During my illness I received hundreds of cards, telephone calls, and other best wishes from CDF friends, both active and retired, from all over the State and am continuing to get some now that I'm at home. I am thoroughly convinced that the many supportive words and communications had a very positive influence on the successful surgery and will serve to strongly influence my rehabilitation so I can return to physical condition where Fran and I can live a meaningful and happy life together.

Again, thanks to the Forestry family for coming to our support when it was needed the most.

Love,

Fred and Fran Cain

I would like to thank all those who sent cards and get well wishes while I was hospitalized at Loma Linda University Medical Center. They made my stay seem a lot shorter and brightened up my days.

Thanks again,  
FCS Jesse DeAnda  
Prado Conservation Camp

## STOCKTON:

To *Communiqué*:

Harry loved the Forestry, but, most of all, the best part was to sit and talk about the good times with all the friends he worked with.

When he retired he left a little of himself there. I would like to thank each of the people who sent contributions in memory of my husband Harry R. Frakes.

Beverly A. Frakes  
Stockton, CA

(Mrs. Frakes sent a long list of names - too many to really print, but we are sure you all know who you are.)

## Lester Phillips

Lester Hugh (Hoot) Phillips, age 58, died on March 27, 1983, of natural causes at a Merced Hospital. Les started his career with CDF in Madera County, and then transferred to the Mendocino Ranger Unit as a Forestry Foreman I. Les transferred to the Madera-Mariposa Ranger Unit in 1961, where he served as patrolman and Usona Station Fire Captain until his retirement in 1974.

A lifetime resident in Mariposa County, Les was born August 15, 1924. He was a veteran of World War II and was well known for his guitar playing in local bands.

He is survived by his wife Roberta of Mariposa, two daughters, Patricia Kelly of Rome, New York and Judy Ward of Los Banos; two sons, James of Mariposa and Thomas of Merced; his father Lester of Mt. Bullion, two sisters Thelma Preston of Raymond and Leona Baxter of LeGrand, and six grandchildren.



## SACRAMENTO:

Mrs. Lewis Moran deeply appreciates all of the cards and letters she has received and the generous remembrances that have been sent to All Saints Memorial Episcopal Church in Lew's name.

Mobile Equipment Manager Walt Harkness reports that retired Maintenance Foreman Marion "Willie" Wilson is seriously ill and bed-ridden at his son's home. Willie, who ran the Davis shop from 1947 until his retirement in 1964, would like to hear from his forestry friends. The address is: Marion Wilson, c/o Don Wilson, 3901 - 176th Court, Torrance, CA 90504.



Region I Chief Dick Ernest recently presented a card signed by Region I employees to Personnel Assistant Vera Johnson during a "coffee" in her honor on the last day of her employment with CDF.

Vera first came to work for CDF District I (sic) on July 15, 1957 as an Intermediate Steno Clerk. During her 26 years with CDF, she has worked in many facets of Region I operations. She promoted to senior steno in 1961, and in 1977 Vera promoted to her most recent position of personnel assistant.

# LEGISLATIVE ROUNDUP

This listing of legislation affecting CDF is compiled monthly by the Legislative Office. For further information, please call (916) 445-6441, (ATSS) 485-6441, or Green Phone 62. Updated as of 4-18-83.

## FIRE PROTECTION AND PREVENTION

*AB 91 (Cortese) Firefighters Procedural Bill of Rights Act. Adds all fire fighters to the definition of public safety officers.—In Assembly Committee on Public Employees and Retirement. OPPOSE.*

*AB 389 (Sher) Would make an arsonist responsible for any injury to a peace officer or fire fighter as a result of the fire he/she set.—Passed Assembly; in Senate. SUPPORT.*

*AB 802 (Sebastiani) If the Department determines that more than one person is eligible for a reward arising out of information relating to the same event, the \$5,000 reward shall be divided among those persons as determined by the Department. (CDF Legislative Proposal).—Passed Assembly Committee on Natural Resources; in Assembly Committee on Ways and Means. SUPPORT.*

*AB 854 (Moore) Creates a Department of Communications within the State and Consumer Services Agency.—Introduced 2-23-83; in Assembly Committee on Governmental Organization. NO POSITION.*

*AB 887 (Seastrand) Extends provisions relating to wiretapping and eavesdropping of specified State Peace officers, including the California State Police.—Introduced 2-24-83; in Assembly Committee on Criminal Law and Public Safety. NO POSITION.*

*AB 1213 (Johnston) Fire protection services; assessments.—In Assembly Committee on Local Government. NEUTRAL.*

*AB 1256 (McAlister) Public liability: Hazardous substance spills.—Introduced 3-2-83; in Assembly Committee on Judiciary. SUPPORT.*

*AB 1326 (Bradley) City and County general plans: safety elements: permissive rather than mandatory.—Introduced 3-2-83; in Assembly Committee on Local Government. NO POSITION.*

*AB 1336 (Floyd) Firefighters: Technical changes.—Introduced 3-2-83; in Assembly Committee on Finance and Insurance. NO POSITION.*

*AB 1337 (Floyd) Forests: Fire protection and prevention: Definition change - "uncontrolled fire".—Introduced 3-2-83; in Assembly Committee on Natural Resources. NO POSITION.*

*AB 1646 (Sebastiani) Forest fires: Crimes: Release and promise to appear procedures.—Introduced 3-3-83; in Assembly Committee on Criminal Law and Public Safety. NO POSITION.*

*SB 197 (Garamendi) Requires the State Fire Marshal to adopt regulations which establish fire safety performance standards for cigarettes and little cigars.—In Senate Committee on Business and Professions. NO POSITION.*

*SB 329 (Johnson) Peace Officers: Disasters.—Introduced 2-10-83; in Senate Committee on Judiciary. SUPPORT.*

*SB 916 (Doolittle) Renewal of EMT-I, EMT-II and EMP-P's cardiopulmonary resuscitation certification every two years rather than annually as currently required.—Introduced 3-3-83; in Senate Committee on Health and Welfare. OPPOSE.*

*SB 955 (Hart) Fire prevention: State responsibility areas.—Introduced 3-3-83; in Senate Committee on Natural Resources and Wildlife. OPPOSE.*

*SB 1124 (Watson) Adds CDF to the Interdepartment Committee on Emergency Medical Services.—Introduced 3-4-83; in Senate Committee on Health and Welfare. NO POSITION.*

## RESOURCE MANAGEMENT

*AB 190 (Goggin) Authorizes the Department of Forestry to establish and administer system of graduated permit fees to provide support to meet cost of administering the Forest Practice Act.—In Assembly Committee on Natural Resources. NEUTRAL.*

*AB 316 (Cortese) Authorizes districts organized under the Water Conservation District Law of 1931 to adopt ordinances. Clarifying amendments to be proposed.—In Assembly Committee on Local Government. OPPOSE.*

*AB 397 (Bradley) Interagency program to eliminate the marijuana industry: Would require various departments to assist in the elimination of this problem.—In Assembly Committee on Criminal Law and Public Safety. NO POSITION.*

*AB 764 (Johnston) Timber operations: Resource conservation standards: stocking standards.—In Assembly Committee on Natural Resources. OPPOSE.*

*AB 925 (Waters) Forest practices; timber harvesting plan; notice and availability.—In Assembly Committee on Natural Resources. NO POSITION.*

*AB 926 (N. Waters) Environmental Quality: Exemptions - projects for protection of natural resources.—Introduced 2-24-83; in Assembly Committee on Natural Resources. NO POSITION.*

*AB 1070 (Stirling) Reserves from school and lieu lands for support of the Teachers' Retirement System.—Introduced 2-28-83; in Assembly Committee on Public Employees and Retirement. NO POSITION.*

*AB 1103 (Hauser) Forest practices; conifer release; permit.—In Assembly Committee on Natural Resources. OPPOSE.*

*AB 1104 (Hauser) Requires the California Economic Adjustment Team to develop a job creation strategy for the North Coast counties.—In Assembly Committee on Labor and Employment. NO POSITION.*

*AB 1108 (Papan) Timberland preserve zones; zoning change applications.—In Assembly Committee on Natural Resources. OPPOSE.*

*AB 1136 (Klehs) Revises the Timber Yield Tax law.—Introduced 3-1-83; in Assembly Committee on Revenue and Taxation. SUPPORT.*

*AB 1377 (LaFollette) Revegetation management pilot projects.—Introduced 3-2-83; in Assembly Committee on Transportation. OPPOSE.*

*SB 201 (Mello) Revises various provisions relating to the operations of the Monterey Peninsula Water Management District. Clarifying amendments to be proposed.—In Senate Committee on Agriculture and Water Resources. SUPPORT IF AMENDED.*

*SB 326 (Johnson) Forest practices: Timber operations and violations: would create a ten-year Timber Management Plan (same as SB 1797, 1982).—In Senate Committee on Natural Resources and Wildlife. SUPPORT IF AMENDED.*

*SB 398 (B. Greene) Would exempt from the California Environmental Quality Act by statute projects carried out under the Z'berg-Nejedly Forest Practice Act of 1973 (same as SB 720, 1981).—In Senate Committee on Finance. NEUTRAL.*

*SB 748 (Ayala) Property Taxation: Timberland - deletion of obsolete valuation schedule.—Introduced 3-1-83; in Senate Committee on Revenue and Taxation. SUPPORT.*

## ADMINISTRATION

*AB 205 (Goggin) Requires the Secretary of the Resources Agency to develop a plan to combine and share administrative services of the departments within the agency.—Assembly Committee on Natural Resources. OPPOSE.*

*AB 226 (Young) Sunsets various state regulatory agencies.—In Assembly Committee on Governmental Organization. NO POSITION.*

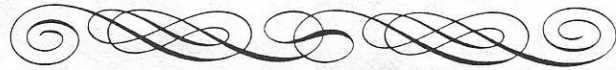
*AB 227 (Young) State administrative regulations: Amends the Government Code to require an economic impact report for new regulations.—In Assembly Committee on Governmental Organization. NO POSITION.*

*AB 1064 (Herger) State administrative regulations; limited effectiveness; requires specified agencies to conduct periodic (every 5 years) reviews of their regulations.—In Assembly Committee on Governmental Organization. NO POSITION.*

*AB 1437 (Katz) Executive organization plan: Abolishment of agencies.—Introduced 3-3-83; in Assembly Committee on Governmental Organization. NO POSITION.*

(continued on page 11)

# PERSONNEL TRANSACTIONS



## NORTH COAST REGION

*Retirement* - PA I Vera R. Johnson, Hqs.  
*25-Year Award* - FC Roger D. Hillendahl

## SIERRA CASCADE REGION

*25-Year Award* - Assist. Civ. Eng. Louis F. Simeroth.

## CENTRAL COAST REGION

*Transfer* - FF, CDF Alfred Gomez to San Benito-Monterey.

*Promotion* - Carla Wemp to FAE, San Mateo-Santa Cruz.

*Reinstatement* - Ronald Aldrich to FC, San Luis Obispo.

## SOUTH SIERRA REGION

*Transfers* - SFR I Kerry W. Elite to Madera-Mariposa; and FF, CDF Brad Eatmon to Fresno-Kings.

*Appointments*- JRichard Rubio to FCS, Mt. Bullion YCC; Robert Martinez to FCS (T&D), Growlersburg CC; and Ricky Henson to FAE, Tulare.

*Separations* - FCS Robert J. Fries, Sierra CC; and FAE Terry Berkeley, Fresno-Kings.

*Retirements* - FC J. David Appling, Madera-Mariposa, and FAE Jack Bair, Tulare.

## SOUTHERN CALIFORNIA REGION

*Appointments* - Glen Hubbard to Hvy. Equip. Mgr., Riverside; Lori Tyrrel to San Diego; and Rodney Wrench to FCS, Prado CC.

*25-Year Awards* - SFR I Carl R. Loft; and FCS Charles White.

## SACRAMENTO HEADQUARTERS

*Appointment* - Alan Zinsky to Machine Oper. I (Gen.); and Ken Kashiwamura to Programmer

*Separations* - Labor Relations Officer Peggy Lucas; and Sec. Karen Yowell.

*25-Year Award* - For. Ill Richard H. Hunt Jr.



(from page 10)

*AB 1601 (N. Waters) Firefighters: Workers' Compensation, Leave of Absence.*—Introduced 3-3-83; in Assembly Committee on Finance and Insurance. OPPOSE.

*SB 1065 (Russell) Public safety officers: Workers' Compensation.* — Introduced 3-4-83; in Senate Committee on Industrial Relations. NO POSITION.

## CAMPS, ENGINEERING, & TECHNICAL SERVICES

*AB 715 (Sher) Allows CDF to enter into contracts or cooperative agreements with local agencies for conservation projects and adds the use of inmates and wards to prevent flood damage resulting from levee breaks or overflows.*—In Assembly Committee on Crimin., Law and Public Safety. SUPPORT.

## EXAMINATION CALENDAR

### UPCOMING EXAMINATIONS

Final filing dates are tentative. Do **Not** submit applications for examinations until the Bulletin has been released.

Title	Exam Base	Final Filing Date
Assoc. Data Processing Analyst	Dept. Prom.	May 26
Assoc. Programmer Analyst	Dept. Prom.	May 26
Assoc. Systems Software Specialist	Dept. Prom.	May 26
Sr. Word Process Technician	Dept. Prom./Servicewide	May 26

### Examinations in Progress

Title	Status
Accountant I (Spec. & Super.)	Written test date: June 4
Accounting Technician	Interviews anticipated in June
Executive Secretary I & II	Interviews anticipated in June and/or July
Sr. Accounting Officer (Spec. & Super.)	Written test date: June 4
State Forest Ranger I	Interviews anticipated in June June and/or July

*AB 1065 (Jones) State-owned real property; White Rock Fire Station; transfer of property.*—In Assembly Committee on Governmental Organization. NEUTRAL.

*AB 1567 (Davis) Truck drivers: Driving hours: Exceptions for drivers assigned to governmental fire suppression and prevention agencies.* — Introduced 3-3-83; in Assembly Committee on Transportation. NO POSITION.

*AB 2046 (Bronzan) Delta levee work: Prisoners and wards.* —Introduced 3-7-83; in Assembly Committee on Water, Parks and Wildlife. NO POSITION.

*AB 2081 (Floyd) CDF name change: Department of Fire and Forestry.* Introduced 3-7-83; in Assembly Committee on Natural Resources. OPPOSE.

# Did you know that...?

- Butte County Superior Court Judges sentenced five arsonists to the State Penitentiary or to the county jail last year. In five separate cases where arson law violations consisted of either burning a vehicle, forest land, structure or a church, CDF's arson investigation unit members Duane Kelly and John Tibbetts were successful in obtaining warrants and putting the arsonists behind bars. Sentencing ranged from one year in the county jail and restitution to CDF to the largest sentence ever handed down to an arsonist in Butte County history - seven years and four months!

- SFR II Bob Weaver, fire research coordinator recently presented one-day "hands-on" training sessions at Region I Headquarters and at Howard State Forest on the care and use of Video Cassette Record-

ing (VCR) equipment, including instruction on the capabilities of infra-red adaptation of VCR. Students included employees from all levels of Ranger Unit and Region Office personnel who are involved in resource management, and fire prevention inspections, fire information duties, training and law enforcement and fire control activities.

- Several months ago K. R. Goings of Region I suggested a column which would include "CDF pertinent" comical errors or misquotes of the month. To date, we have had no takers, but try this one. . . . " On March 31, \_\_\_\_\_ recently received a special award."

- The June issue of *Communique* will honor former Director of Forestry Lew Moran who passed away on February 21, 1983.

- The deadline for *Communique* articles is the *fifth* of each month.

A total of 12 area regular and reserve police and firemen were feted at the Napa Chamber of Commerce's "Evening of Honor" on April 1. The officers were recognized for their special contributions to the local community in both on- and off-duty situations.

David De Forge was named as the CDF fire fighter of the year. He went to work in Napa County in 1965 as battalion chief at the Napa station. In 1973, he was transferred to Spanish Flat as district ranger-battalion chief.

"The people who work for him, and with him, have a high regard and respect for his abilities and experience," it was noted. "He has strong community ties at Lake Berryessa and has spent much of his off-duty time responding to fires and medical emergencies when no one else has been available."

## From:

CALIFORNIA DEPARTMENT OF FORESTRY  
OFFICE OF PUBLIC AFFAIRS  
1416 NINTH STREET  
SACRAMENTO, CA 95814

